

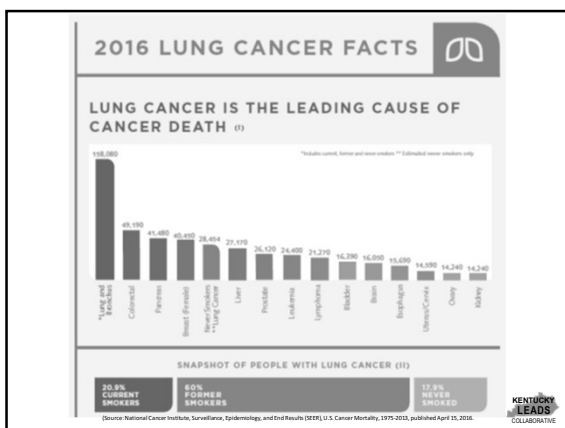


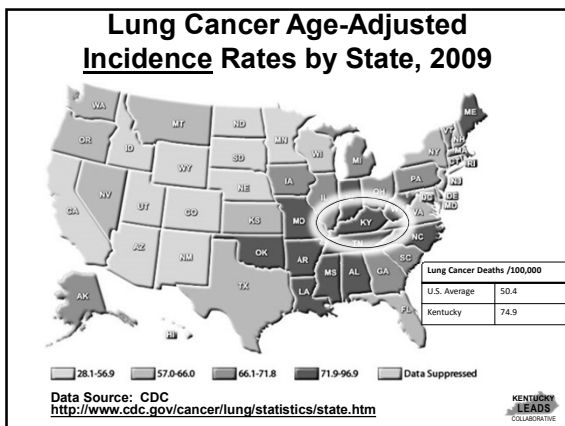
KENTUCKY LEADS COLLABORATIVE

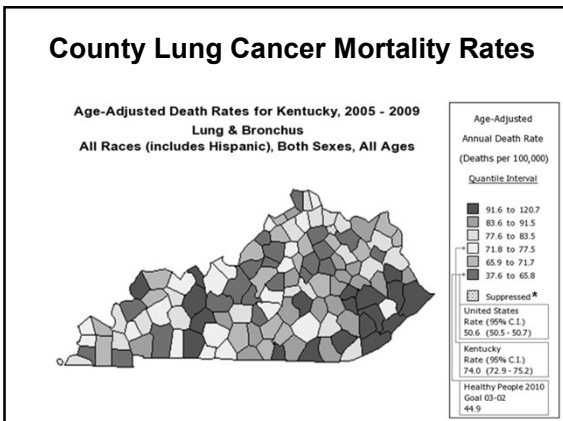
LUNG CANCER
EDUCATION • AWARENESS
DETECTION • SURVIVORSHIP

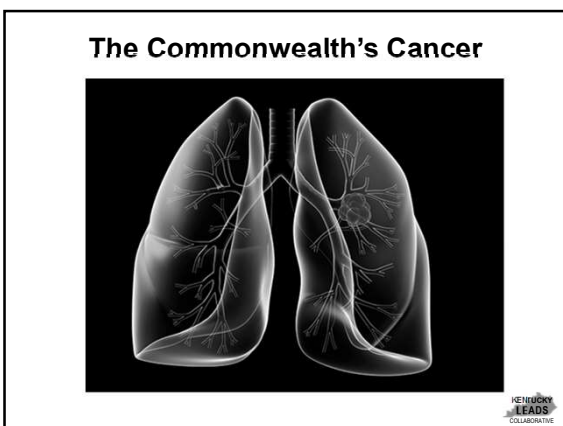
- Lung Cancer
- Education
- Awareness
- Detection
- Survivorship









KENTUCKY LEADS COLLABORATIVE

LUNG CANCER
EDUCATION • AWARENESS
DETECTION • SURVIVORSHIP

- **L**ung Cancer
- **E**ducation
- **A**wareness
- **D**etection
- **S**urvivorship

Bristol-Myers Squibb Foundation

\$7 million grant from BMSF
\$1.5 million challenge match

Kentucky LEADS Collaborative

UKHealthCare
Markey Cancer Center

UK

James Graham Brown
Cancer Center
— UL HealthCare

LCA UofL

LUNG CANCER ALLIANCE

KENTUCKY LEADS COLLABORATIVE

**Kentucky LEADS Collaborative
Fundamental Principles**

- **Community-Engaged**
 - Over 15 implementation sites throughout KY
 - Over 20 additional community partners & organizations
 - Integration of community and medical advisory boards
- **Interdisciplinary**
 - oncology, nursing, social work, palliative care, education, public health, communication, advocacy, psychology
- **Multi-Level**
 - Healthcare providers
 - Individuals diagnosed with lung cancer and caregivers
 - Health Systems/Lung Cancer Screening Programs

KENTUCKY LEADS COLLABORATIVE

Kentucky LEADS Collaborative

Integrated & Interdisciplinary

KENTUCKY LEADS COLLABORATIVE
