

Commonwealth of Kentucky
Overview of Kentucky HEALTH

*All information based on Kentucky
HEALTH Waiver proposal.
Information is subject to change.*

Kentucky Health Program Overview

Kentucky HEALTH is the Commonwealth's new program for certain low-income adults and their families. The program gets its name from its mission.



Helping to Engage & Achieve Long Term Health

This innovative program brings together existing state agencies and programs, and leverages federal funding to **improve member access to health**, educational, financial, and professional development resources that can **help families and communities grow and thrive over the long-term.**

Challenges Facing Kentucky

Nationally, Kentucky is ranked close to last in many crucial areas.
 The state's unemployment rate, poverty rate, workforce participation rate and wages are all significantly below the national average.



Over the past decade, the opioid epidemic has wreaked havoc on our families, communities and economy.

- Overdose deaths have climbed to more than 1,000 per year.
- Kentucky's rate of babies born drug-addicted is twice the national average.
- Drug abuse has negative impacts on daily life and work functions, and is weakening people's employability (attendance, teamwork, and productivity).
- All of these factors cause higher unemployment.

Kentucky is among the worst nationally in several key population health metrics.

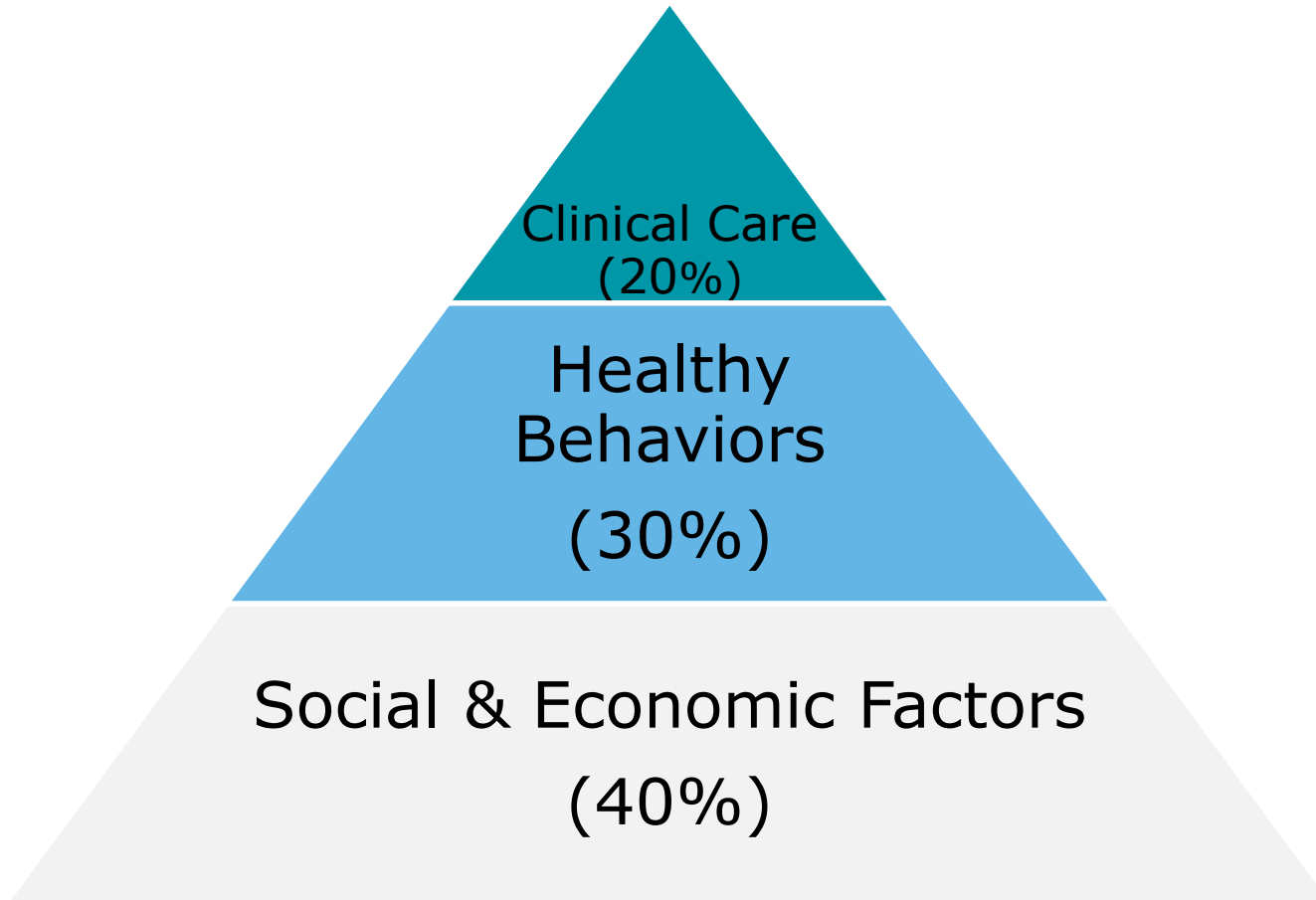
- 1st in the nation for cancer deaths, 2nd highest in the nation for smoking.
- Nearly 1/3 of Kentuckians are obese (12th highest rate in the nation).
- There are 6.8 infant deaths per 1,000 live births (17th highest rate in the nation).
- 8 of 13 counties in the nation with largest declines in life expectancy since the 1980s are in Kentucky.

Unsustainable Growth

- **High poverty & high Medicaid enrollment**
 - Workforce participation is 59.4%, 45th in the nation
 - 19% of Kentuckians live in poverty
 - 47th in the nation for median household income
 - **Nearly 1/3 of total state population is enrolled in Medicaid**
- **Poor health outcomes despite high spending**
 - 1 out of 3 Kentuckians are obese
 - Ranks 2nd highest in the nation for smoking
 - Ranks 1st highest in the nation for cancer deaths
- **No long term financing plan**
 - Kentucky is projected to spend approximately **\$1.2 billion** over the next five years on expanded Medicaid benefits (SFY 2017-2021)

The cost growth in Medicaid expansion threatens funding for traditional Medicaid coverage for the aged, blind, disabled, pregnant women, & children.

What Determines Health?



Access to healthcare alone will **NOT** dramatically improve the health of Kentuckians.

Kentucky HEALTH Covered Populations

Medicaid Populations *Not Included* in Kentucky HEALTH
Traditional Medicaid (*Aged, Blind & Disabled*) and Former Foster Youth up to age 26

Medicaid Populations *Included* in Kentucky HEALTH
Non-Disabled Adults & Children (*Individuals covered before expansion, pregnant women, children, & adult expansion population*)

Home and Community Based Waiver - 1915(c)
No Change

Model Waiver II – 1915(c)
No Change

Michelle P Waiver – 1915(c)
No Change

Supports for Community Living – 1915(c)
No Change

Acquired Brain Injury – 1915(c)
No Change

Acquired Brain Injury, Long Term Care – 1915(c)
No Change

Nursing Facility and ICF/MR Residents
No Change

Qualified Medicare Beneficiaries
No Change

Traditional Medicaid Adults Eligible Prior to Expansion

- Premiums or Copays
- No Change in Benefits (continue to get vision and dental through MCO)
- Community Engagement required, unless primary caretaker of dependent

Medicaid Expansion Adults

- Premiums or Copays
- State Employee Benefits
- Vision and Dental available through My Rewards Account
- Community Engagement required, unless primary caretaker of dependent

Pregnant Women & Children (Traditional Medicaid and KCHIP)

- No Premiums
- No Change in Benefits
- Community Engagement initiative not required

Medically Frail Adults

- Optional Premiums (for access to My Rewards)
- No Change in Benefits
- Community Engagement initiative not required

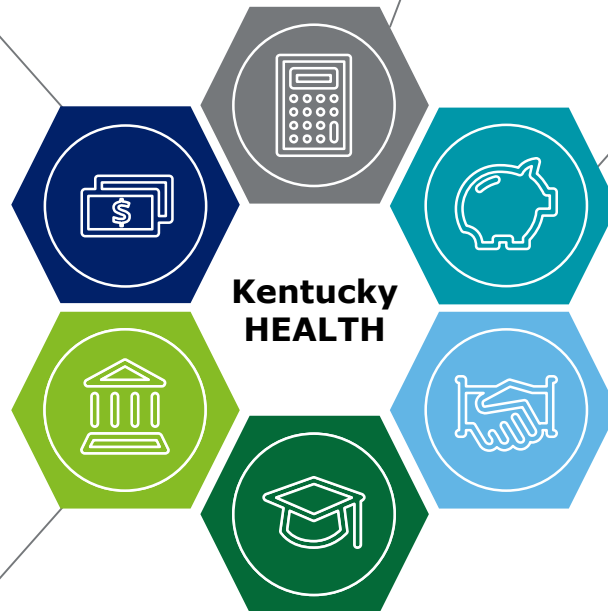
Key Components of Kentucky HEALTH

Cost Sharing

Cost sharing introduces members to critical commercial market features, including making timely monthly premiums, tracking deductibles, and managing a healthcare account a way of investing in own health.

Premium Assistance

Establishes a path for the state to pay member's premium if employer sponsored insurance is available.



**Kentucky
HEALTH**

Deductible Account

The deductible account empowers individuals to make cost-conscious healthcare decisions.

My Rewards Account

My Rewards Account provides incentives for members to improve their health, engage in their communities, and improve their job skills.

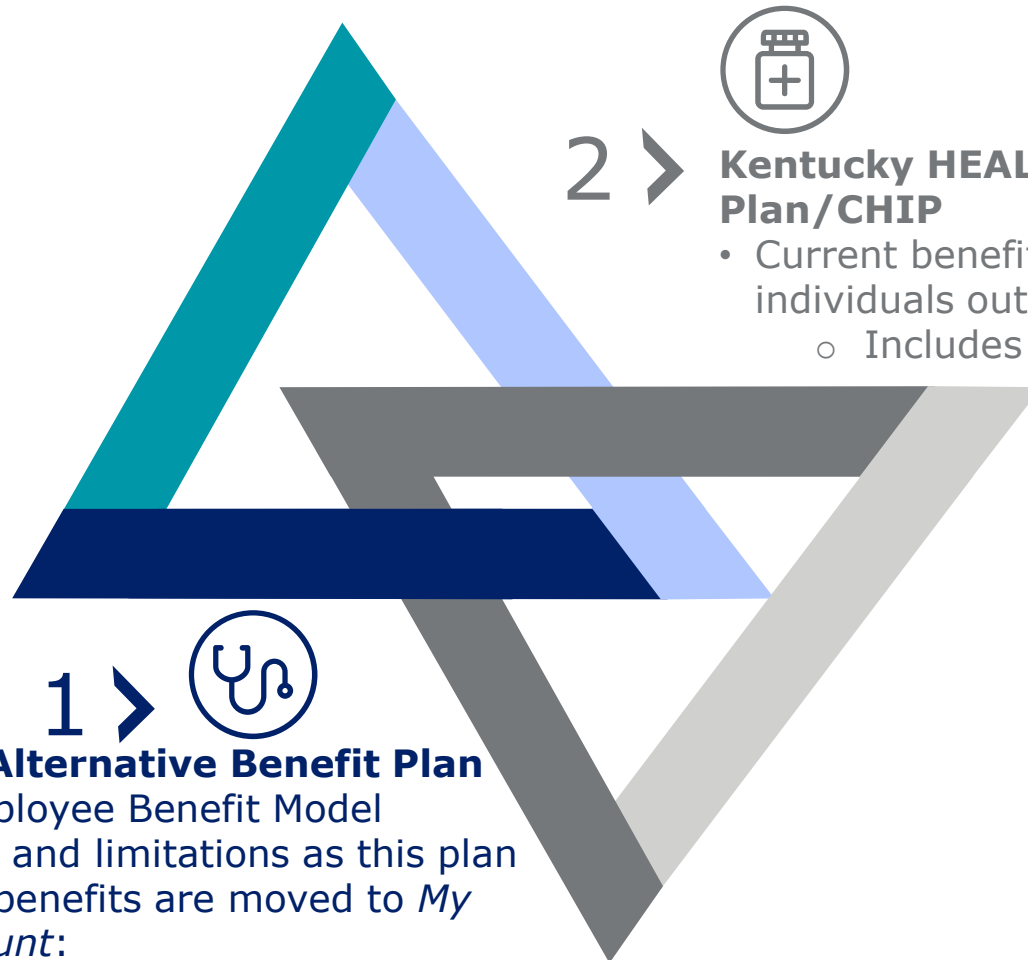
PATH Program

Research shows an important link between some sort of community engagement (like volunteer work, public service, and employment) and an individual's overall health and well-being. This program is a unique community engagement and employment initiative for Kentucky HEALTH members designed to build and strengthen Kentucky's workforce.

Education and Training

The Health and Financial Literacy classes allow Kentuckians to gain skills for long-term independence and success.

Benefit Overview



1 >

Kentucky HEALTH Alternative Benefit Plan

- Kentucky State Employee Benefit Model
 - Same benefits and limitations as this plan
 - The following benefits are moved to *My Rewards Account*:
 - Vision
 - Dental
 - The following benefits are added to *My Rewards Account*:
 - Gym membership & fitness activities



2 >

Kentucky HEALTH Medicaid State Plan/CHIP

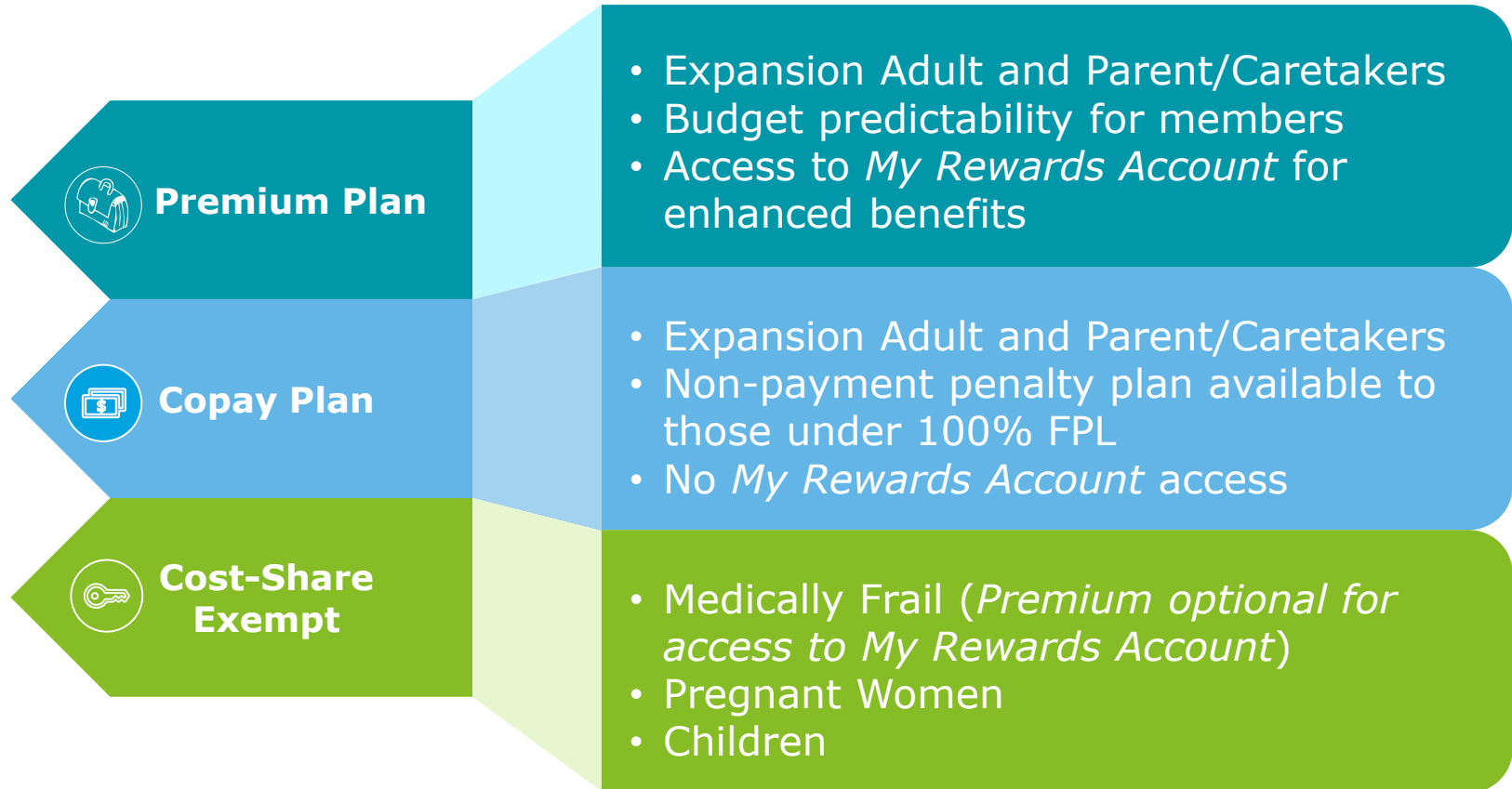
- Current benefits available to individuals outside of the Adult Group
 - Includes Medically Frail

Benefits by Population

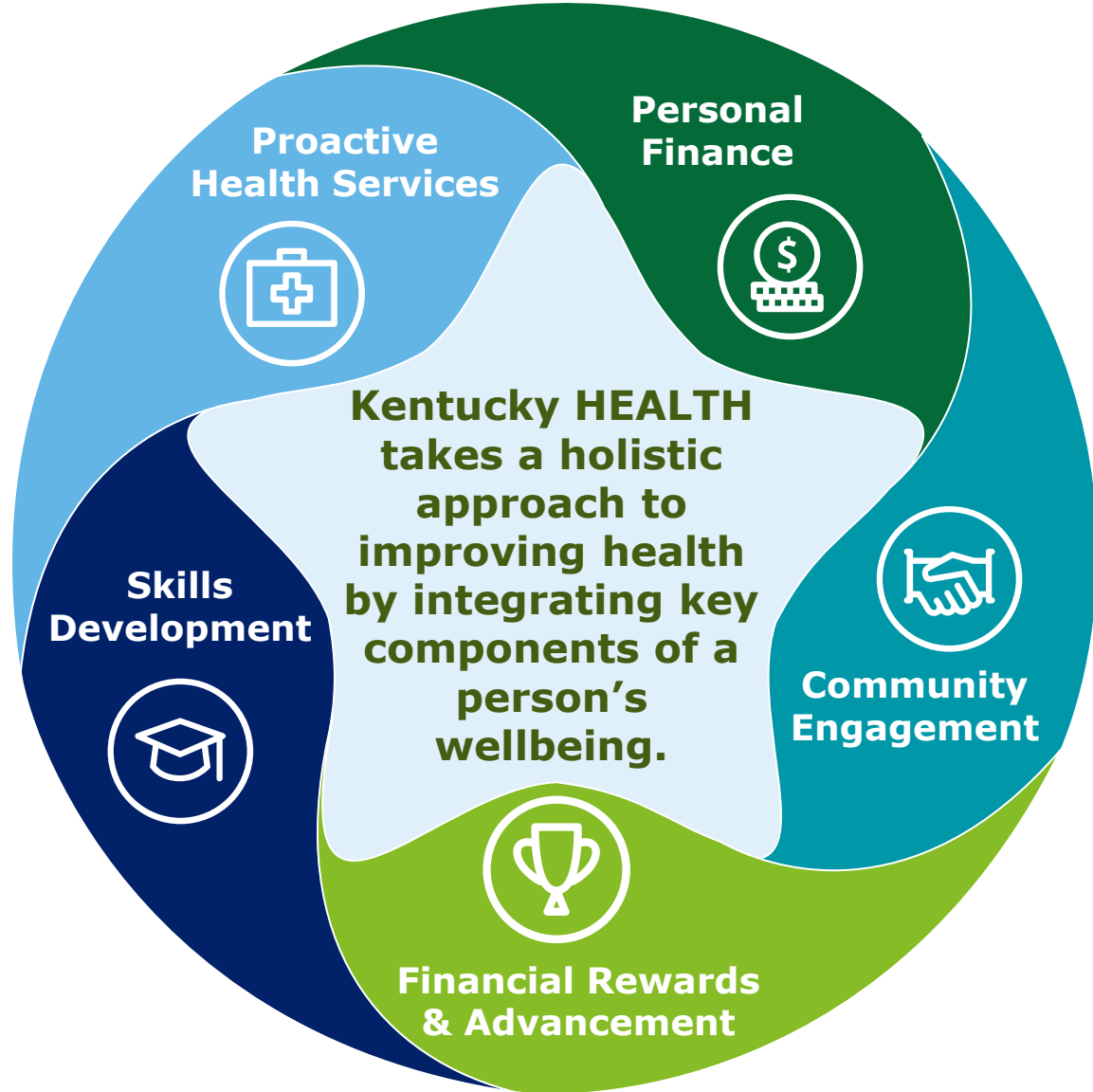
Population	Benefit Package
Adult Group	Kentucky HEALTH Alternative Benefit Plan
• Medically Frail Adults	No change in benefits (Medicaid State Plan)
• Pregnant Adults	No change in benefits (Medicaid State Plan)
Parents and Caretakers & TMA	No change in benefits (Medicaid State Plan)
Pregnancy Category	No change in benefits (Medicaid State Plan)
Children	No change in benefits (Medicaid State Plan)

Note: Vision and dental coverage will continue to be covered by the MCOs (not the My Rewards Account) for all members with access to Medicaid State Plan benefits.

Kentucky HEALTH Cost Sharing



INTEGRATED APPROACH TO IMPROVING OUTCOMES



**Proactive
Health Services**



**Personal
Finance**



**Kentucky HEALTH
takes a holistic
approach to
improving health
by integrating key
components of a
person's
wellbeing.**

**Skills
Development**



**Community
Engagement**



**Financial Rewards
& Advancement**



My Rewards Account Earned Incentives

Education and Training	Community Engagement
Complete health risk assessment with MCO	Register with career center and complete goal needs assessment
Complete diabetes, cardiovascular, or other chronic disease management, or weight management course	Participate in qualifying community service activity (including services)
"Complete HANDS Program"	Complete job skills training or training with career coach
Participate in Moving Beyond Depression (MBD)	Job Search Activities
Participate in Special Supplemental Nutrition Program for Woman, Infants, and Children (WIC)	Employment - related education or GED - prep classes
Complete a My Rewards Course	Passing the GED exam
Prevention	Healthy Living
Health Screenings, including: Mammograms, Pap Smears, Prostrate Screenings, Colonoscopy, & Flu Shots	Sign non-smoking pledge and participate in smoking cessation activity
Annual Physical including Biometric screening	Sign drug-free pledge and participate in drug addiction counseling service (including alcohol)
Complete well-child, preventative dental exam or vision screening for the Dependent child	Complete First Step Program
One Adult Preventative Dental Exam	Avoid inappropriate Emergency Room Visits
One Adult Preventative Vision Exam	Follow-up Visits with Primary Care Physician after ER Visit

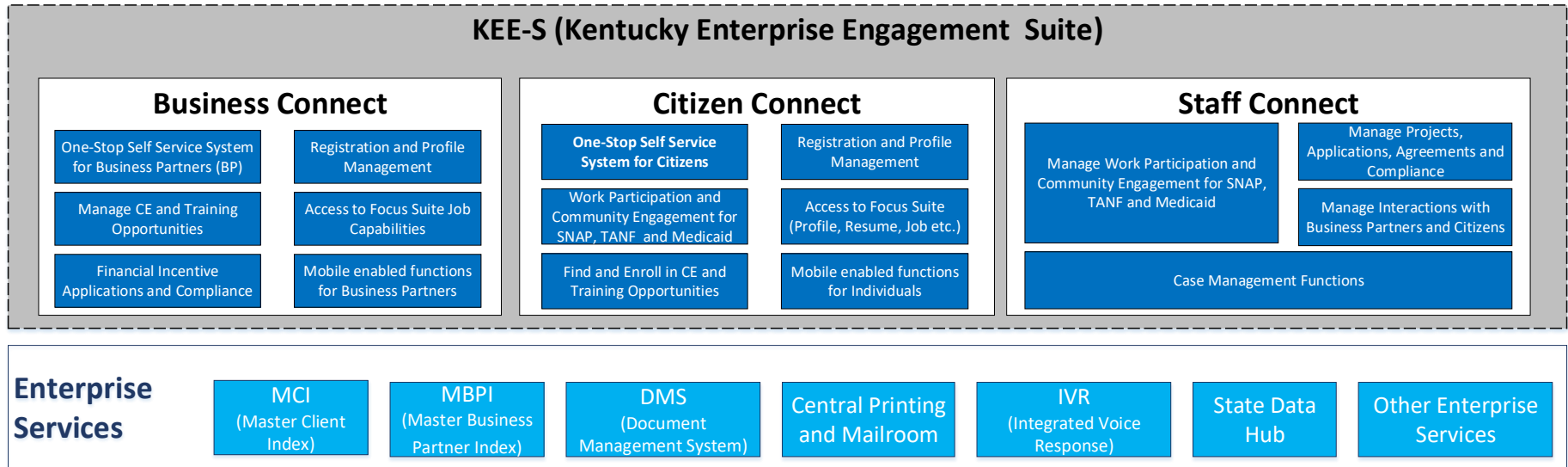
Community Engagement and Employment Initiative

Research shows an important link between some sort of community engagement (like volunteer work, public service, or employment) and an individual's overall health and well-being. The PATH program is a unique community engagement and employment initiative for Kentucky HEALTH members designed to build and strengthen Kentucky's health and workforce.

<p>Policy</p>	<ul style="list-style-type: none"> • Able-bodied working age adults who are not otherwise exempt are required to complete community engagement and employment activities
<p>What's Changing?</p>	<ul style="list-style-type: none"> • Non-exempt members will need to complete qualifying activities to maintain eligibility, such as employment, volunteering, caretaking, job training, and education
<p>Who is Impacted?</p>	<ul style="list-style-type: none"> • All able-bodied working age adult Kentucky HEALTH members <ul style="list-style-type: none"> • Expansion Adults • Parent/Caretakers relatives
<p>Not Impacted</p>	<ul style="list-style-type: none"> • Children • Pregnant Women • Medically Frail • Chronically Homeless • Primary Caregiver of a Dependent • Full-Time Students • Full-Time Employed • Those meeting SNAP/TANF work requirements

Kentucky Enterprise Engagement suite (KEE-suite)

- KEE – Suite is a Salesforce based suite of applications that will be used across multiple cabinets
- It is being created with an eye for the future to streamline how Citizens and Business Partners engage with the Commonwealth of Kentucky
- KEE Suite enables Commonwealth to streamline common functions and enterprise services, and lays the foundation for creation of an Intuitive, Intelligent and Integrated Government.



Kentucky HEALTH Proposed Roadmap

Thread	2017					2018											
	A	S	O	N	D	J	F	M	A	M	J	J	A	S	O	N	D
<p>Kentucky HEALTH Phase #1</p> <ul style="list-style-type: none"> • Identification of Kentucky HEALTH population for outreach • Members can earn My Rewards dollars for preventive services (will be credited retroactively based on claims beginning January 1, 2018) 					◆												
<p>Kentucky HEALTH Phase #2</p> <ul style="list-style-type: none"> • Community Engagement: Courses for My Rewards accrual available • My Rewards: Accrual of My Rewards dollars, ongoing load of rewards accrued by members beginning 1/1/18 based on claims data for preventive services • Community Engagement courses available beginning 4/1/18 					◆												
<p>Kentucky HEALTH Phase #3</p> <ul style="list-style-type: none"> • Implementation of Alternate Benefits Plan (ABP) • Tracking of penalties and suspension • Community Engagement: Begin tracking Community Engagement hours, enable business connect functions (such as ability for partners to register and post opportunities), re-entry courses available • My Rewards: Claims processing for member reimbursement, Medicaid provider authorization and claims processing for dental and vision services • Implementation of Premium Assistance 					◆												